



RIBBONS

EUROPEAN LIFTING & LASHING PRODUCTS





RIBBONS

POLYESTER WEBBING SLINGS

FEATURE :

- Double ply polyester webbing sling with reinforced lifting eyes.
- Working load limit WLL. 1-12 Tonne, Length 1-50 Mtr.

SPECIFICATIONS :

- Sling are constructed of 100% polyester
- Certified standard DIN V 61360 Show at blue lable
- Safety factor 7:1
- Each kg class has its own colour code. (see technical data)
- Max. working temp. 100 °C (200 °F) Melting point 260 °C (500 °F)
- Excellant resistant to acids, oil, ultra violet ray, rot and mildew.
- Lightweight easy to handle, store and clean.
- No less of strength in water.
- Only 3% elongation.

NORMS

- According to Machine Directive 89/392/EC.



webbing width (mm)	Colourcode according to DIN-EN 1492-1		Working Load Limits with 1 webbing sling					Working Load Limits with 2 webbing sling			
			straght lift	choked lift	β			straght lift up to 45°	choked lift up to 45°	straght lift 45° - 60°	choked lift 45° - 60°
					0° - 7°	7° - 45°	45° - 60°				
			1.0	0.8	2.0	1.4	1.0	1.4	1.12	1.0	0.8
35	WLL 1 T	Violet	1.000	800	2.000	1.400	1.000	1.400	1.120	1.000	800
60	WLL 2 T	Green	2.000	1.600	4.000	2.800	2.000	2.800	2.240	2.000	1.600
75	WLL 3 T	Yellow	3.000	2.400	6.000	4.200	3.000	4.200	3.360	3.000	2.400
100	WLL 4 T	Grey	4.000	3.200	8.000	5.600	4.000	5.600	4.480	4.000	3.200
125	WLL 5 T	Red	5.000	4.000	10.000	7.000	5.000	7.000	5.600	5.000	4.000
150	WLL 6 T	Brown	6.000	4.800	12.000	8.400	6.000	8.400	6.720	6.000	4.800
200	WLL 8 T	Blue	8.000	6.400	16.000	11.200	8.000	11.200	8.960	8.000	6.400
250	WLL 10 T	Orange	10.000	8.000	20.000	14.000	10.000	14.000	11.200	10.000	8.000
300	WLL 12 T	Orange	12.000	9.600	24.000	16.800	12.000	16.800	13.440	12.000	9.600



RIBBONS

POLYESTER ROUND SLINGS

FEATURE :

- Polyester roundsling with two ply woven heavy-duty sleeve.
- Round Sling Endless and Round Strop Sling with eyes
- Working load limith WLL. 1-40 Tonne. Length 1-20 Mtr.

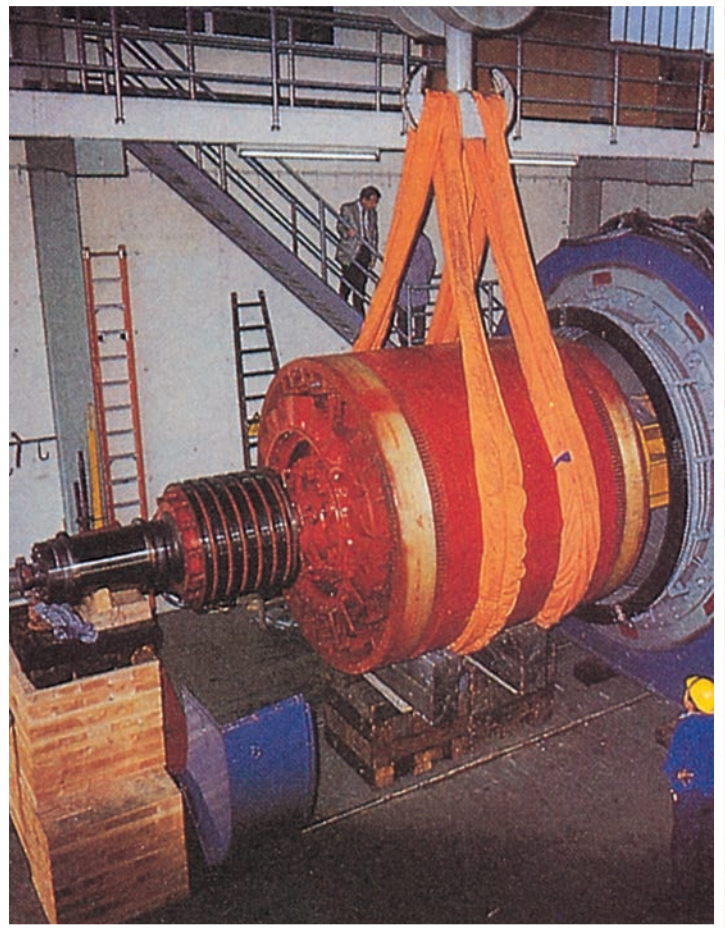
SPECIFICATIONS :

- Sling are constructed of 100% polyester.
- Certified standard DIN V 61360 Show at blue lable
- Safety factor 8:1
- The load bearing yarns are protected by a double layer seamieess polyester-cover.
- Only 3% elongation.

NORMS

- According to Machine Directive 89/392/EC.

RE-5 roundsling with 2-ply woven heavy-duty sleeve
 The roundsling inner core is made from high tensile polyester fibre which is wound continuously without a join to provide the maximum possible strength.
 This core is protected by a tough woven tubular sleeve also made from polyester without side stitch.
 It serves to protect both the inner core of the sling and the surface of the product which is lifting.



type	Colourcode according to DIN-EN 1492-1		Working Load Limits with 1 round sling						Working Load Limits with 2 round sling				
			straight lift	choked lift	0°- 7°	β				straght lift up to 45°	choked lift up to 45°	straght lift 45°- 60°	choked lift 45°- 60°
						bis 7°	7°- 45°	45°- 60°	45°- 60°				
			1.0	0.8	2.0	1.4	1.0	0.7	0.5	1.4	1.12	1.0	0.8
RE-5/10	WLL 1 T	Violet	1.000	800	2.000	1.400	1.000	700	500	1.400	1.120	1.000	800
RE-5/20	WLL 2 T	Green	2.000	1.600	4.000	2.800	2.000	2.000	1.000	2.800	2.240	2.000	1.600
RE-5/30	WLL 3 T	Yellow	3.000	2.400	6.000	4.200	3.000	2.100	1.500	4.200	3.360	3.000	2.400
RE-5/40	WLL 4 T	Grey	4.000	3.200	8.000	5.600	4.000	2.800	2.000	5.600	4.480	4.000	3.200
RE-5/50	WLL 5 T	Red	5.000	4.000	10.000	7.000	5.000	3.500	2.500	7.000	5.600	5.000	4.000
RE-5/60	WLL 6 T	Brown	6.000	4.800	12.000	8.400	6.000	4.200	3.000	8.400	6.720	6.000	4.800
RE-5/80	WLL 8 T	Blue	8.000	6.400	16.000	11.200	8.000	5.600	4.000	11.200	8.960	8.000	6.400
RE-5/100	WLL 10 T	Orange	10.000	8.000	20.000	14.000	10.000	7.000	5.000	14.000	11.200	10.000	8.000
RE-5/120	WLL 12 T	Orange	12.000	9.600	24.000	16.800	12.000	8.400	6.000	16.800	13.440	12.000	9.600
RE-5/150	WLL 15 T	Orange	15.000	12.000	30.000	21.000	15.000	10.500	7.500	21.000	16.800	15.000	12.000
RE-5/200	WLL 20 T	Orange	20.000	16.000	40.000	28.000	20.000	14.000	10.000	28.000	22.400	20.000	16.000
RE-5/250	WLL 25 T	Orange	25.000	20.000	50.000	35.000	25.000	17.500	12.500	35.000	28.000	25.000	20.000
RE-5/300	WLL 30 T	Orange	30.000	24.000	60.000	42.000	30.000	21.000	15.000	42.000	33.600	30.000	24.000
RE-5/400	WLL 40 T	Orange	40.000	32.000	80.000	56.000	40.000	28.000	20.000	56.000	44.800	40.000	32.000



RIBBONS

LIFTING SLINGS with METAL COMPONENT

FEATURE :

- Polyester roundsling assembly with metal components.
- One-, two-, three- or four-legged.

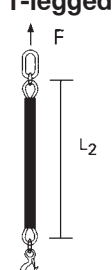
SPECIFICATIONS :

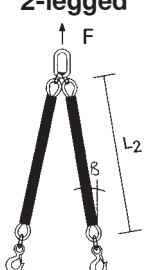
- Each leg is protected by a sleeve.
- Standard Hook HS, other hooks on request.
- Lengths according to requirements.
- Light and easy to handle.
- Easy to control.

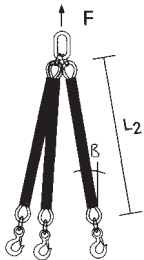
CHARACTERISTICS

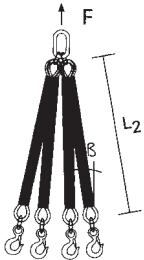
- Low elongation.
- Extremely wear-resistant.



1-legged 	load capacity (kg)		Type of roundsling
		1.000	
	2.000		RS-5/20
	3.000		RS-5/30
	4.000		RS-5/40
	5.000		RS-5/50

2-legged 	β		Type of roundsling
	0-45°	45° - 60°	
	1.400	1.000	RS-5/10
	2.800	2.000	RS-5/20
	4.200	3.000	RS-5/30
	5.600	4.000	RS-5/40
	7.000	5.000	RS-5/50

3-legged 	β		Type of roundsling
	0-45°	45° - 60°	
	2.100	1.500	RS-5/10
	4.200	3.000	RS-5/20
	6.300	4.500	RS-5/30
	8.400	6.000	RS-5/40
	10.500	7.500	RS-5/50

4-legged 	β		Type of roundsling
	0-45°	45° - 60°	
	2.100	1.500	RS-5/10
	4.200	3.000	RS-5/20
	6.300	4.500	RS-5/30
	8.400	6.000	RS-5/40
	10.500	7.500	RS-5/50



RIBBONS

LASHING SYSTEM
RATCHET STRAP
with HOOK
LASHING SYSTEM,
TIE DOWN



LSW9912

4" Ratchet strap with hooks, Extra heavy duty, B/S 12,000 Kgs.



LSW7510

3" Ratchet strap with hooks, Heavy duty, B/S 10,000 Kgs.



LSW5050

2" Ratchet strap with hooks, B/S 5,000 Kgs.



LSW5060

2" Ratchet strap with hooks, B/S 6,000 Kgs.



LSW2515

1" Ratchet strap with hooks, Light duty, B/S 1,500 Kgs.

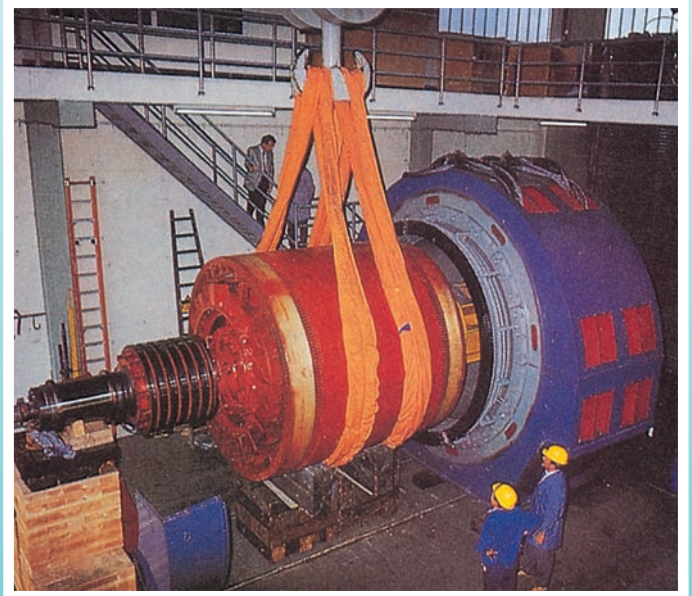


LSW3530

1-1/2" Ratchet strap with hook, B/S 3,000 Kgs.



RIBBONS



บริษัท เทคนิคอล ลิฟท์-ออล จำกัด
124/137/7 ถนนติวานนท์ ตำบลตลาดขวัญ อำเภอเมือง จังหวัดนนทบุรี 11000
TECHNICAL LIFT-ALL CO.,LTD.
124/137/7 Tiwanon Rd., T. Taladkwan, A. Muang, Nonthaburi 11000
Tel. 0-2968-1896-8 Fax : 0-2968-1899
E-mail : liftall@liftall.co.th, liftall@jl-net.com
www.liftall.co.th